

Through the Window by Kannikar Sukseree

A simple design with cut openings reveals the insert of the card. 3D flowers are placed outside the window and this is a card which is suitable for any occasion.

You will need

Your basic tool kit plus:

Pergamano

Star tool

Four needle perforating tool

Perga glue

Rub-ons Butterflies white

plus

Low tack tape

Parchment scissors or snips

Lavender coloured cardboard

Five pearl in circle a single pearls

Front card

Step 1: Place a piece of parchment paper on top of the pattern. With your four needle tool perforate shallowly according to the pattern.

Step 2: Remove from the pattern. On the reverse, emboss with your extra small ball tool between the four needle perforations, following the embossing pattern.

Step 3: With the right side facing up, perforate deeply with your four needle tool.

Step 4: Cut according to the patterns.

3D flower elements



Step 5: Trace the flower elements with a white pencil. Emboss the petals with your small and extra large tools following the image above. Once embossed, cut them out.

Step 6: Attach petal three to petal two and then on to petal one using perga glue. Once the glue has dried, emboss with your extra large ball at the centre of the flower until all of the petals have curled upward.

Step 7: Attach the 5 pearl in circle at the centre of flower with perga glue, leave to dry.

Finishing

Step 8: Fold the card at the fold line and cut to size. Insert a lavender coloured card then secure with dabs of glue at the fold.

Step 9: Rub a butterfly to the left hand corner.

Step 10: Arrange 3D flowers on the front of the card. One by one pick up flower and glue at the back and place it right back on. Repeat the same with the rest of the flowers.

Bunny Love by Mary G. Kerr

This cute little bunny will put a smile on anyone's face this Easter. It is also suitable for a child's birthday, or even a birth. The additional greeting tag could also be used as a bookmark.

You will need

Your basic tool kit plus:

Pergamano

Fantasy parchment paper paradise green

Fantasy parchment paper moss green

Drop perforating tool

Semi circle perforating tool

Dorso colours (lively and natural)

Pergaliners A1, A3, A5, A10

Tinta green ink

Mapping pen

Perga glue

PCA

Medium sun embossing tool

Fine straight flexiduo grid

plus

Faber Castell polychromos pencils

Daler Rowney pearlescent liquid acrylic silver moss

No. 2 Da Vinci paintbrush

Double sided tape and 3M craft mount

3mm lemon organza ribbon

Green pearlescent card

Trace

Trace the entire pattern (except the bunny) with your white pencil on the paradise green fantasy parchment paper with the dull side facing up.

Emboss

On the reverse go over the traced outer and inner ovals with your small ball tool. Emboss the flowers and the eight elements around the drop tool perforations with an extra small ball tool. Emboss between the semi circle perforations around the outline with your medium sun tool. Dip dot the centre of each flower with a large ball tool and pearlescent silver moss paint

Perforate

Shallow perforate over the pattern with your drop tool. Re-perforate deep with a single needle tool. Shallow perforate around the outline with a semi circle perforating tool, then re-perforate deep with a single needle tool.

Cut

Cut around all of the perforations with scissors.

Dorse

On a plain piece of parchment paper dorse from the top to the bottom with blue and light green from the lively colour range and dark green from the natural colour range.

Bunny

Secure your plain piece of parchment paper to the pattern, and colour the bunny with Polychromos pencils as indicated following the photo of finished piece. I used (101) white, (119) light magenta, (124) rose carmine, (131) medium flesh, (189) cinnamon, (190) Venetian red and (274) warm grey v.

With a damp brush lift the colour from the pergaliners and paint in the whiskers, eyes, nose, stems and claws creating fine lines. Emboss the small flowers with an extra small ball tool, dip dot the centre of each flower with a small ball tool and pearlescent silver moss paint. Emboss the head, body, tail, outer ears and ribbon with an extra large ball tool and draw fine strokes on the bunny with a single needle tool to indicate the fur. Trace the outer oval with your white pencil and cut around this with scissors.

Greeting Tag

Secure your plain piece of parchment paper to the grid, perforate, emboss and cut as shown in grid/embossing diagram. Trace the happy Easter greeting with tinta green and your mapping pen. Cut a piece of paradise green parchment paper to the size of the tag and secure both pieces together with 3M craft mount, add a piece of organza ribbon to the tag with double sided tape and secure to the back of card as shown in the photo of the finished piece.

Finishing

Secure a piece of moss green parchment paper to your card as an insert with removable tape. Shallow perforate around the outline with your semi-circle tool shallow and then emboss between the perforations with your sun tool and extra small ball tool. Re-perforate deep with a single needle tool and cut around the outline with scissors. Line up the bunny piece within the cut out oval and secure with double sided tape or perga glue. Secure the card and insert together with perga glue or a method of your own choice. Using the stand pattern as a template, trace around the outline of the stand on to your green pearlescent card, cut around the outline with scissor, with a scoring tool score a line where it

shows the blue dotted line, fold this over to make a flat flap and secure to the back of your card with double sided tape, this makes it possible for your card to stand upright when displayed.

In the Pink by Bruno Piechota

Experienced parchment crafters will enjoy the challenge that this floral design provides.

You will need

Your basic tool kit plus:

Pergamano

Dorso colours (lively)

Dorso oil

Pintura purple paint

Tinta white ink

plus

Embossing mat

Perforating mat

Trace

Place your parchment onto the pattern and secure with low tack tape. Trace the outer and inner border images using either white tinta ink or a white pencil. Trace the flowers with purple pintura. Remove the parchment from the pattern and line up the section that you have just traced. Repeat the tracing procedure three times so that once completed you have a completed square.

Colour

Once the tracing has been finished, turn it over and colour it with purple dorso. Use your oil to blend.

Emboss

Still working on the reverse, emboss all of the sections (that are coloured in black on the pattern) with a small ball tool. Don't emboss the flowers.

Paint

With purple pintura colour the outside and centre of the big flowers and little flowers (but not the centre). Before you emboss, you need to leave the piece to dry.

Emboss

Emboss the big flowers with a large ball tool. Make use of your extra small ball to emboss the little flowers. Use the same tool to make lines on the big flowers working from the centre to the outside.

Perforate

Work between all of the embossed parts with a two needle tool and then around the outside of the design.

Cut

Use your scissors or snips to cut out all of the perforated points around the outside of the project.

Finishing

Once you've cut everything out, place the piece between two heavy books and leave to rest for at least a day or so. The piece would look great underneath a flower vase or carafe or put it in a frame and use a wall decoration.

Best Wishes by Dorothy Holness

A general design for any occasion which has been worked with polychromos pencils.

You will need

Your basic tool kit plus:

PCA

Star tool

Pergamano

Star tool

Fine straight grid

05 and 11 grids (optional)

plus

Embossing mat

Faber Castell polychromos pencils

Blending medium

Perforate

If you are using a grid to work the perforating, and it's not the one listed, it may work out very slightly different in size. So, do the perforating first, remove the parchment from the grid and place over the pattern, adjusting the position if necessary.

Trace

Trace the design to be embossed with white pencil just making marks for the petals and leaves.

Mark the corners of the borders with a dot of white pencil and join these on the back of the parchment with a ball tool and rule.

Colour

Colour over the pattern, without tracing, using polychromos colours of your choice and blending with a medium of your choice.

Emboss

The small flowers and leaves can be embossed freehand with a fine ball tool, or using the small elements from the Pergamano patterned grids. Emboss the light areas of the coloured flowers and leaves as shown in the picture. With a micro ball tool and either sun/star tool, work the design in the lace pattern.

Cut

With scissors, or snips, cut through the three perforations as indicated on the chart.

Finishing

The insert can be white card faced with coloured paper - or coloured card. If using white card, attach inside the parchment card with narrow double-sided tape along the fold at the back of the parchment and the tape will not show on the white card. If using coloured card, just leave a 2cm strip at the back of the parchment and cover the join with a strip of peel-off edging.

Title

Thinking of You by Aileen Childs

Standfirst

Aileen Childs shows parchment crafters familiar with grid work how to create beautiful and unique borders. The opportunities for variation and decoration are almost endless.

You will need

Your basic tool kit plus

PCA

Micro sun embossing tool

Bold straight flexiduo grid

plus

Embossing mat

Perforating mat

Fine liner pen

Grid Work

Mark a starting point for the grid work using a lead pencil, then line up the parchment on the grid and secure using low tack tape. Follow the pattern to perforate using your bold one needle tool. Turn the parchment over and secure using mapping pins through the already perforated holes and emboss where shown using a small ball tool. Remove from the grid, place onto a rubber embossing mat (for firmness) and then emboss using a micro sun tool between the perforations on the first and third rows.

Trace

Place your parchment back over the pattern and secure then trace the design and greeting using black ink. I used a Rotring 0.5 but a fine liner or ink and nib would do just as well.

Emboss

Using ball tools, emboss all of the petals and tiny dots leaving small sections to allow the colour to show through. I'd advise that you start with the largest ball first and emboss using a combination of long and short strokes from the tips of each petal towards the base, then repeat the process with the next smallest tool and so on until you have the desired whiteness. Stipple the centres of the flowers.

Colour

Use black felt tipped pens on the reverse of the parchment.

Finishing

Cut and remove the waste from the edge of the border. Fold in half and attach to a coloured piece of insert card.

Having a Cat Nap by Christine Coleman

Playing with yarn is such a tiresome job!

You will need

Your basic tool kit plus:

PCA

Micro sun embossing tool

Mega sun embossing tool

Bold straight flexiduo grid

plus

Faber Castell polychromos pencils

Splender Blender

Gold thread

Cherry stick/tooth pick

Trace

With a white pencil, trace the outline of the card, the scallops and the blanket.

Colour

Making sure that your pencils have very sharp points, colour in the cat with polychromos pencils.

Use the following colours; (101) white, (102) cream, (103) ivory, (111) cadmium orange, (130) dark flesh, (132) light flesh, (181) paynes grey and (192) Indian red. Use the flesh colours for the nose and mouth and (192) Indian red for the shadows and definition in the eyes, adding just a touch of (181) paynes grey for any shadows. Use a combination of (101) white and (181) paynes grey for the whiskers.

Turn to the back and use the following colours for the blanket; (140) light ultramarine, (143) deep cobalt, (146) sky blue, (181) paynes grey and (230) cold grey 1.

Make sure that you press hard so that plenty of colour shows through the parchment. Start with the darkest colour first and work down to the lightest and use the Splender Blender to blend the colours together. Erase the white pencil on the front.

Emboss

Use your stylus tool to work the whiskers and your micro sun tool for the spots on the blanket. Work the scallops with your medium ball tool and then use your mega sun tool in between. Emboss a dot in the sun tool impressions and use a rule and mini shader to emboss the border.

Perforate

Place the card on to the bold diagonal grid and perforate two rows of holes with a unibold tool and then cut around the perforations with scissors or snips.

Finishing

Use a rule and a medium ball tool to score a fold line. Fold the card and sew in an insert of your choice. Wind some gold or coloured thread around a cherry stick/tooth pick that has been dipped into PVA glue to resemble a ball of wool. Leave some spare and cut away the stick. Perforate the card around the cat's paw and sew the thread in and out of the holes. Use silicone glue to attach the ball of wool and tiny dots of PVA glue to hold the thread.

A Little Bit of Luck by Tina Heron

This project is for a friend's wedding. The colour can be changed to fit your occasion. This is a simple pattern that is sure to please the recipient and is robust enough to cope with wedding day handling.

You will need

Your basic tool kit plus:

PCA

Mega sun embossing tool

Large sun embossing tool

Bold semi circle perforating tool

Bold daisy perforating tool

plus

Gold paint

Pink pearlised paint

Fine paint brush

Brads

Ribbon

Silicone glue

Preparation

Trace and cut two horse shoe shapes and 20cm (8") of ribbon. Stick the two horseshoes together with the ribbon between the layers.

Trace

Trace the horse shoe and cross hatching using gold paint and a fine brush.

Perforate

Use your bold semi circle tool to shallow perforate around the shape. Then, working with the bold daisy tool, shallow perforate the intersections of the cross hatching.

Emboss

Emboss between the cross hatching with your two sun tools. Use the medium ball tool to emboss the scalloped edge.

Perforate

Deep pierce the intersections with the daisy tool and re-pierce the scalloped edge end separate the perforations.

Cut

Carefully cut out the daisy shapes. Work the horse shoe twice so that the item can be seen on both sides. To attach to the insert card place small amounts of silicone glue in the centre of the sun tool embossing.

Flowers

Each flower consists of six layers so you will need two of each size to make up one flower. The flowers are painted with pearlised paint. I have not used a traditional painting technique but I suggest that each petal is painted in one direction.

Trace

Use your micro ball tool to trace the flowers. Cut them out using straight scissors.

Paint

Paint the flower shapes. Don't worry about the curling, the shapes will uncurl as they dry.

Emboss

Shape emboss using your mega ball tool. On the reverse side, emboss the petal tips, then on the right side emboss the centre of the flower. Layer up the flower alternating the position of the petals and secure with a brad. Use silicone glue to attach the flowers to the horse shoe.

Birthday Grid Work by Andy Harper

Here's a heavily gridded piece of work which once finished can accommodate a photo.

You will need

Your basic tool kit plus:

PCA

Mega sun embossing tool

Bold diagonal flexiduo grid

plus

Embossing mat

Perforating mat

Coloured brads

Making the Grid Work

I created this piece of grid work using the PCA bold diagonal flexiduo grid and an A4 sheet of parchment with the intention of making a large card (attached to an A3 piece of card) or as piece in which to insert a photograph and frame.

Attach your piece of parchment to the grid, and stick down in all four corners with low tack tape.

Start with the outside bobbles working on a rubber or leather embossing mat, copying the pattern as shown. In total there are six bobbles in the zig-zag edge and ten on the four corners.

Turn the grid over and perforate the holes using a bold one needle tool around the outside and inside edges working over a perforating mat

Flip the grid and parchment back over and do the next full row of bobbles inside that (don't forget to alternate your mats).

Follow this by turning over again to do the four by four squares of holes inside the zig-zags using a bold one needle tool. *(NB: some are cut out later and some have four bobbles inside them).*

Turn over the grid and parchment and do the bobbles around these 4 x 4 squares of holes.

Then turn over again and do the 2 x 2 holes and then the shape of ten holes inside that.

Turn back and do the bobbles around these shapes. When doing the border in towards the centre of the pattern, do the corner patterns as per the sample.

Finally, start the centre trellis design, by doing the shape of twelve holes of the trellis pattern, directly inside the shape of ten holes that you have just done leaving just three spaces in between.

Work to the pattern, copying the square shapes and follow the sample. When you have done all the holes, turn the grid and parchment over and do the bobbles in between, covering the whole design as per the sample.

The shapes that are left are for a photograph or greeting as you can see. The large square shape could be at the top and the greeting underneath if you wish.

I have finished this off by sticking a large white circular peel-off inside the large square.

The swirly peel-offs and the greeting are from the same set, that way everything matches.

Inside the circle, I used the mega sun tool, with a bobble of embossing inside, then I used the bold twin needle tool to perforate inside that and finally, using small parchment scissors, perforated out the centre shape. The swirly peel-off just makes the shape a little bit different to just being a plain circle. Cut your photograph into a circle the same size as the circular peel-off and attach with double sided tape or silicone glue underneath the mega sun tool shapes.

Finally, cut out all the shapes in the border and trellis design, and attach the whole thing to the card with brads.

Easter Egg by Kay James

Here's a decorative card for Easter. It's been designed for those of you who like using coloured pencils and grid work.

You will need

Your basic tool kit plus:

Pergamano

Small star embossing tool

Moon perforating tool

Semi circle perforating tool

Diagonal grid

Multi grid no. 5

plus

Rainbow parchment

Faber Castell polychromos pencils

Embossing mat

Perforating mat

Insert card

Coloured beads

Trace

Begin by securing your parchment to the design and trace the egg, the lettering, the lines above and below the letters, and the border edges of the card. (The lines around the Easter egg are guide lines only).

Shallow Perforate

Perforate around the egg using your moon tool. Work around the border of the card and the top line on the egg with your semi circle tool.

Colour

On the front of parchment colour the large flowers. Colour each petal working from the edges to the centre and from the centre outwards. Follow the formation of the petals and use your pencils to create strokes of different lengths. For two of the flowers use the following colours; (136) purple violet and (249) mauve. The middle flower was achieved by using (119) light magenta and (133) magenta.

Blend the colours of all the petals with a small application of (133) ivory.

Still working on the front of your parchment, colour the bow using (154) light cobalt turquoise, (156) cobalt green and (158) deep cobalt green. Use the same method of colouring, making sure you follow the formation of the bow.

Emboss

Emboss the large flowers using a variety of embossing tools, working from the tips towards the centres of each petal. Lightly emboss the bow. Emboss the smaller flowers using the multi grid no. 5, positioning the grid approximately where I have drawn them. Emboss the letters, the two dotted lines, the small leaves and the border lines. Work in the moon and semi-circle shallow perforations.

Perforate

Working with the diagonal grid perforate section A. Perforate and emboss section B using the grid reference. Re-perforate the moon and semi-circle perforations.

Cut

With parchment scissors or snips, cut around the perforations on section B. Cut around the semi circle perforations on the border of the card.

Finishing

Fold the parchment on the fold line and insert the rainbow coloured parchment. Insert the coloured card and sew together at the spine. (Add some coloured beads when sewing the layers together).

Lady in Blue by Ann Hubbard

Ann Hubbard designed this card for her best friend and thought that you could make this for yours!

You will need

Your basic tool kit plus:

Pergamano

Parchment paper shaded blue

Hockey stick embossing tool

Semi-circle perforating tool

Tinta gold ink

Tinta black ink

Tinta blue ink

Tinta yellow ink

Tinta sepia ink

Tinta perla white

Perga Liners

Multi grid 26

plus

Blending medium

Blue mirror card

Trace

Using ordinary parchment paper, trace the fan and outline of the card with white pencil. Using an equal mix of sepia and yellow tinta inks, trace the face and body. Trace the dress with blue tinta ink. Using white tinta perla, make a pattern all over the dress. Ann worked anti-clockwise and clockwise creating swirls.

Paint

Working from the front, colour the face and body using B10 perga liner, then blend. Paint around the outline of the face and body using A17. Use perga liners A12 and A2 for the lips; A1, A3, A4, A5 and A17 for the eyes.

Colour

Working from the front, use the dry technique with perga liners B2, B3, B9 and B12 for the hair. Working on the back, use a small amount of B11 on the cheeks, then blend. Colour the dress with B4 then blend. Working on the front, use B4 to highlight the shadows and shapes of the dress.

Emboss

From the back, emboss the fan using the hockey stick and large embossing tools.

Grid Work

Position multi grid 26 as shown, and emboss, perforate and cut.

Perforate

Shallow perforate, using the semi-circle perforating tool inside the embossed semi-circles from the grid work. Using the extra small ball embossing tool, emboss to form segments. Re-perforate deeper and cut out around the outer edge and push out the wings slightly.

Trace and Paint

Place the card on the lettering positioning it between the semi-circles. Using black tinta ink, trace the lettering and paint to form solid letters. Outline the letters with gold tinta ink.

Finishing

Using a sheet of shaded blue parchment and the multi grid 26, emboss, perforate and cut as per the pattern. Fold both parchment papers and attach to the blue mirror card either by sewing or sticking with double sided tape.

Ripples by Julie Roces

Despite appearances, this impressive floral project isn't difficult, just detailed and demanding patience.

You will need

Your basic tool kit plus:

Pergamano

Two split tool

Semi circle perforating tool

Diamond perforating tool

Grid regular mesh

plus

White/silver adhesive gems

Trace

Trace the entire pattern with white pencil or mapping pen and white ink. You may include the 3D elements by tracing flowers 1-3 and leaf 1 on a separate sheet of parchment paper.

Emboss

Emboss the water lilies and leaves using your small and large ball embossing tools or shader. Emboss the scroll-shaped ripples on the lace work using ball embossing tools. Also emboss the leaves and stems within the lace work using the small and large ball embossing tools.

Stipple

With your one needle tool, stipple the areas marked 'S' including the rectangular border.

Perforate

Transfer the parchment onto a regular mesh grid and in the grey shaded sections of the flowers, perforate these areas using a diamond perforating tool. Remove the parchment from the grid and with your perforating mat and two-split tool, perforate around the edges of the water lilies and also around the top portion of the lace work. If the 3D elements are to be included, also perforate around the edges of flowers 1-3 and leaf 1. Use your one needle tool to perforate the areas marked with a black circle. Cut out the two split perforations.

Finishing

Add a complementing border using a semi-circle perforating tool. Emboss the areas within the semi circle perforations and punch the middle with a one needle tool. Cut out the edges of the semi circle perforations. Arrange the 3D elements onto their exact positions on the pattern and apply glue or you may position the flowers in a slightly off-centre angle. Add white or silver paste jewels on top of the grey

circular motifs within the scroll shaped ripples to illustrate sparkling ripples of water. Arrange your finished work on a heavier cardstock, secure your work with glue or double sided tape and frame as desired.

All Hearts Card by Mary G. Kerr

The centre piece in this bold and eye catching design will test your cutting skills and is a card suitable for a variety of occasions.

You will need

Your basic tool kit plus:

PCA

Bold straight flexi duo grid

Medium sun embossing tool

Large sun embossing tool

Pergamano

Fantasy parchment paper red

Perga glue

plus

Embossing mat

Perforating mat

Red adhesive gem

Trace

Secure a sheet of plain parchment paper to the pattern and trace with your white pencil.

Emboss

Emboss your outline with a small ball tool, then secure your paper to your bold straight grid with removable tape and emboss as embossing diagram 'A'. With your large and medium sun tools emboss as shown in the pattern. Emboss the four flowers with large and small ball tools. Erase any visible pencil lines on both pieces.

Perforate

Perforate deep with your two needle tool as shown on the pattern. Secure to a folded sheet of red fantasy parchment insert and perforate deep through all four layers with your two needle tool.

Cut

Cut around the outline through all four layers, and the rest of the perforations with your scissors.

Centre Medallion

Trace medallion one on the shiny side of the red fantasy parchment paper with your white pencil then emboss all of the lines and flowers with a small ball tool as shown in the photo of the finished card.

Perforate deep around the outlines with your two needle tool and cut all of the perforations with scissors.

Trace medallion two on plain parchment paper with your white pencil, emboss all of the lines using a small ball tool, perforate deep around the outline and as shown on the pattern with your two needle tool and cut all of the perforations with scissors. Trace the single flower on plain parchment with your white pencil, emboss with your large and small ball tool, perforate deep around the outline with your two needle tool then cut all of the perforations with your scissors.

Finishing

Secure the two parts of the main card together with perga glue or method of your own choice.

Assemble the medallions as shown in the photo of the finished card, glue together with perga glue, and place in the centre of the card. Secure one adhesive gem to the centre.

Pure Perfection by Christine Coleman

Some well perforated incisions allow the insert card to show through on this multi functional design.

You will need

Your basic tool kit plus:

PCA

Micro sun embossing tool

Small sun embossing tool

Mini shader tool

Bold straight flexiduo grid

Pergamano

Violet tinta ink

plus

Embossing mat

Perforating mat

Violet coloured pencil

Trace

With a white pencil trace the outline of the card.

Grid Work

Attach the traced image to your bold straight grid and use your unibold tool to work the grid design in the centre of the card following the pattern.

Trace

Trace the flowers and leaves with violet tinta ink or a violet micron .005 pen.

Emboss

Use your micro and small sun tools to work in the grid work. (This is shown on the pattern). Emboss the dots in the grid work with your medium ball tool and the petals with a medium ball tool. Emboss the flowers and leaves in the usual way with the mini shader and then the tiny flowers and buds with a medium ball tool.

Colour

Turn the piece over and use a violet coloured pencil to colour the shaded areas of the flowers, leaves and buds.

Grid Work

Work the grid design around the edge of the card. Emboss a small sun tool as shown.

Cut

Use scissors or snips to cut crosses, hexagons and half hexagons in the grid work. Cut around the outer edge of the border design as shown.

Finishing

Use a rule and medium ball tool to score a fold line through the centre. Fold a piece of card in half and sew in an insert of your choice.

All in Blue by Bruno Piechota

The inspiration behind this gorgeous piece of work came from a visit to a museum where they were displaying a collection of Delft pottery.

You will need

Your basic tool kit plus:

Pergamano

Shader embossing tool

Star perforating tool

Double four perforating tool

Drop perforating tool

Swirl perforating tool

Pintura blue paint

Pintura white paint

Dorso colours (lively)

Dorso oil

plus

Scissors

Before starting, make a copy of the pattern as you will need it when you perforate.

Trace

Secure your sheet of parchment to the pattern and trace the flowers and leaves with blue pintura. Turn the parchment paper over and add some blue dorso to it and finish with oil, thus creating a nice even colour.

Paint

Carefully fill in all of the leaves with blue and white pintura.

Perforate

Working on the front of the sheet, shallow perforate the frame of the design using the following tools; double four, drop, swirl, star point and four needle.

Emboss

Emboss all of the black parts around the frame (see close up detail on pattern) with a small ball tool. Use your shader tool to emboss all of the highlights in and around the roses and leaves.

Perforate

Use the same tools to re-perforate all of the sections that you previously perforated.

Cut

Using scissors or snips cut out all of the perforated points of the frame.

Finishing

Attach the finished piece to a piece of black card using double sided tape behind the flowers.

The Easter Bunny by Alison Yeates

Alison's Easter egg features softly coloured flowers, a delicate grid work cross and pretty border.

You will need

Your basic tool kit plus:

PCA

Small sun embossing tool

Micro shader tool

Fine straight flexiduo grid

Pergamano

Semi circle tool

Fine grid no 4

plus

Gold ink and mapping pen

Blendable pencils

Zest-it or other blending medium.

Embossing mat

Perforating mat

Trace

With white pencil, trace the pattern. Use gold ink to trace the greeting.

Emboss

Emboss the rabbit with your mega ball and extra small ball tools. Use your stylus for the tail, whiskers and outline of eye. Using the micro shader and small ball tools, emboss the daffodils and ribbon.

Grid

Place the parchment onto the grid with the wrong side uppermost. Emboss the dots into grid along the traced lines of the cross. Remove from grid and turn the parchment over; replace onto grid and perforate the grid pattern as show.

Perforate

Using the semi circle tool, perforate around the inside of the egg.

Colour

With pencils colour the nose and eye of the rabbit from the front, and the inner ear from the back of the parchment. On the reverse, colour the flowers on the egg, edge of egg, daffodils and stems. Blend carefully with blending medium to maintain the shape of the flowers on the egg.

Emboss

Carefully work inside the semi circle shapes and the dots within the grid as shown.

Cut

Cut all of the four needle holes to crosses.

Finishing

Erase the white pencil from the front of parchment. Trim around the outer edge and mount onto purple card with brads in the corners, then onto a folded white card.

Workshop

A Grid Work Master Class

This project uses the PCA fine straight grid (although any straight grid can be used) to both perforate and emboss patterns. The areas between the grid worked sections have been perforated with a two needle tool and cut out. Stippling has been used to add interest to the finished design.

You will need

Your basic tool kit plus:

PCA

Micro sun embossing tool

Fine straight flexiduo grid

plus

Firm surface for stippling, ie mountboard, cutting mat, cardboard.

Fine sandpaper

Craft knife

Graphite pencil

To Make the Card

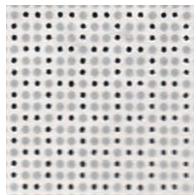
Trace

Trace the whole design with a graphite pencil.

Perforate

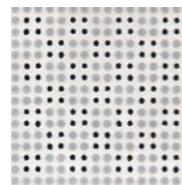
Attach your parchment to the grid with the front side facing you. Following the guide, use your single needle tool to perforate areas 'A' and 'B'.

Insert Area A



and

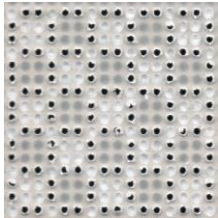
Insert Area B



Emboss

Turn over the parchment and re-align the holes. Use a micro ball tool to emboss the dots on the grid in areas A between the perforations following the grid embossing guide. Areas 'C' are embossed in each hole.

Insert Area A



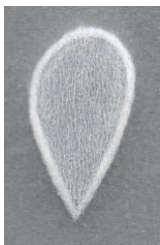
Emboss

Work all of the outlines of the design and card with a small ball tool. Use your micro sun tool between the holes in area 'B'.

Stipple

Areas marked 'S' on the back of the work with a fine single needle tool. Lightly emboss the areas to be stippled with a large ball tool from the back of the parchment. Work on a firm surface with the fine sandpaper facing up underneath the parchment and tap lightly with the single needle tool. If you are making large holes in the parchment then you are tapping too hard. The area should be filled to the outline and there should be no visible grey areas between the white dots.

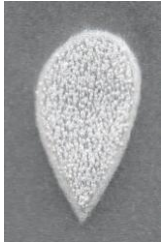
The example below shows the outline embossed with the small ball tool and the inside of the outline has been embossed with a large ball tool.



The second example shows the stippling worked from the tip of the area to halfway up the shape.



The final example shows the stippling completed.



Top Tip: If you are stippling a large area, use a multi needle to begin with, and then fill in the areas not stippled with a single needle tool – much quicker!

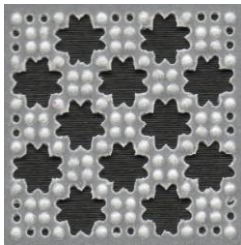
Perforate

Work around the areas marked 'X' with a two needle tool.

Cut

Cut out the perforations in the areas marked 'B' to crosses and areas marked 'A' following the cutting guide. Cut out the areas marked 'X'.

Insert Area AA



Finishing

Emboss the fold line with a small ball tool and rule and fold the card in half adding an insert of your choice. Cut around the outline of the card with a craft knife and rule.

Ask Josie...

Have you got a parchment craft related scenario that's stumped you? Have you tried a specific technique that's not quite worked? Ever wondered if you should be using a small ball or large ball tool? If the answer's yes or you have a question to ask, why not put it to our resident expert. If chosen, your question and answer could feature in the issue. You can email Josie on: Josied57@googlemail.com or write to the address found on page two.

Dear Josie,

I am trying to work with a flexible fine mesh grid. I have no problem embossing the design, but when I turn the grid over and place it on the perforating mat I can't see the embossed areas clearly enough to perforate accurately.

Do you have any tips that would help?

Kathy Round, Aycliffe Village, Co. Durham.

Hello Kathy,

I also find it very difficult to see through the fine grids. So, I take the parchment off the grid and turn it over then re-attach it lining the holes up. To make this easier butt the edge of the parchment up to the edge of the grid when you first attach it and use your tape to create a hinge around one edge of the grid. When you have done all of your embossing or perforating on the grid you will be able to turn the grid over and flip the parchment around it, you can then line the dots or perforations already made up much easier with the grid holes. It doesn't matter if you emboss or perforate first as this will work either way, of course if you emboss first then you can always perforate out any embossing you have accidentally done!

Yellow Rose by Jenny Eggleton

Working on coloured parchment can have a very striking result, here is a vivid yellow rose worked with Pergaliners on black parchment.

You will need

Your basic tool kit plus:

Pergamano

Black parchment flex

Multi grid no 13

Pergaliners

Perga glue

plus

Light box

Corner punch

Gold thread and needle

Gold ribbon

Gold gems

Ultrafine glitter

Trace

Place the black parchment over the pattern and on top of your lightbox, or if you are using white carbon paper, sandwich between the pattern and the black parchment with the pattern on top. If you're using carbon, trace over the pattern with your extra small ball tool. Don't trace if you're using a light box.

Colour

To create layer one, apply a soft covering of pergaliner B1 (white) over all of the petals. Work each one carefully, ensuring to follow the curves of the petal. Work a second layer with B8 (yellow) going in the same direction as the white going over each petal.

At the base of each petal add a little B9 (orange) for shading then add a very small amount of B13 (dark red), for the dark shadow. Go over all of the petals again with B1 to create the 'bloom'. Use B7 (light green) a little B15 (olive green) and a tiny amount of B13 (dark red) to colour in the leaves.

Finishing

Put a tiny amount of pergaglu on the folded 'lips' of the petals and add fine glitter. Leave to dry before perforating and cutting out using the fifth ring of perforations in from the outside edge on multigrad 13. (10.5cm diameter). NB: Also perforate the sixth ring in ready for sewing.

Using parchment paper flex, emboss and perforate all the patterns and perforations on multigrid 13 from the fifth ring of perforations into the ninth ring in. Cut out external ring (10.5cm) and ninth ring (aperture 7cm). Sew the flex to the black through the perforations of the sixth ring with gold thread. Attach the two layers to the centre of the folded cardstock. Add gold bow.

Punch out four black corners and four flex parchment corners. Using the patterns on the multi grid, add embossing to the flex corners. On each corner, glue a black corner with a flex corner on top.

Add gold gems to the four corners and the centre of the bow.

Chinese Vase by Ji Hong

This beautiful oriental design has been created using only embossing techniques.

You will need

Your basic tool kit plus:

Pergamano

Hockey stick embossing tool

Perga glue

plus

Embossing mat

Perforating mat

Trace

Attach your parchment to the pattern and trace the whole design with a white pencil.

Emboss

Turn the parchment over and emboss the border with your small and large ball tools. Emboss the flowers, vase and ribbon with the small ball and then again with the large ball and hockey stick tools.

Stipple

Place the parchment under a piece cardboard or sandpaper and use your single needle tool to stipple the calyx and flower heart.

Perforate

Work around the border with your two needle tool.

Cut

Cut out the two needle perforations with either scissors or snips.

Finishing

Cut a sheet of coloured card stock to size and attach the finished project to it with perga glue.

Back to Basics by Sue McGuirk

Are you new to parchment craft? Don't know where to start or what tools you'll need? Over the coming months we hope to encourage you to try this beautiful craft using a minimum number of tools.

If you've ever looked at the number of parchment tools and grids that are currently available you have probably felt a bit overwhelmed and uncertain as to what you actually need. There are kits available which include the basic equipment such as ink, mapping pen, an embossing tool and a perforating tool as well as a perforating/embossing mat and these are ideal when you are just starting out as you have everything in one box. It is also a little cheaper than buying everything individually but you will soon find that the single needle perforating tool, whilst it does the job, is a little laborious when you want to try some of the more lacy designs.

Getting to grips with a mapping pen and learning how to use it correctly can be a bit tricky especially if you haven't seen it done before. For that reason I tend to use a white pencil for tracing rather than ink. It is more forgiving and, if you make a mistake, can be erased. I use a white, water colour pencil which I can sharpen to a very fine point using a good sharpener.

If you don't want to buy a kit then the minimum number of tools I would recommend to anyone starting out with parchment craft is a white pencil for tracing, a single needle tool, two needle tool and four needle tool. You can reproduce most patterns using just these three perforating tools. You will also need small, medium and large ball embossing tools and an embossing/perforating mat. The mat needs to be at least 1cm thick so that the points of the perforating tools – and your work desk - aren't damaged. Additionally you'll need some low tack tape which you use to temporarily fasten your parchment to the pattern while tracing and perforating, a metal rule and craft knife and parchment scissors or snips which have very fine points and are curved at the ends.

This equipment forms part of the 'basic tool kit' shown inside the front cover of this magazine and each pattern will tell you whether you need anything in addition to the basic kit. If nothing else is mentioned then make sure you have at least the items listed above.

Gift Tag or Gift Card Holder

You will need

White pencil

Single needle perforating tool

Small ball embossing tool

Medium ball embossing tool

Steel rule

Craft knife

Before you begin

It is easier to work the pattern by taking a photocopy of it first, so that you can lay it on a flat surface and you won't damage the page, or your tools, when perforating. It is also a good idea at this stage to rub the back of your parchment with a dry tumble drier sheet or waxed paper which helps the embossing tools to glide over the parchment without 'snagging'.

Next, use a small piece of low-tack tape to temporarily secure your parchment to the pattern along the top edge. Make sure you leave enough parchment at the left-hand side of the fold line so that when you come to fold the card in half the back isn't shorter than the front.

Trace

Lay the taped parchment and pattern on a firm surface and trace the entire design including the text and outline of the card using your white pencil. You do not need to trace the little black dots as these are perforations. Check that you have traced everything by slipping a piece of dark coloured card between the parchment and the pattern, this will show up any areas which may have been missed.

Perforate (Shallow)

Place your taped parchment and pattern on a pricking mat and use your single needle tool to shallow perforate all of the black dots. When using perforating tools hold them vertically to the parchment and press down gently but firmly so the needles just pierce the parchment. If you pierce too deeply at this stage then there is a danger of splitting the parchment when you do your embossing. You can now separate the parchment from the pattern by removing the tape.

Emboss

Embossing is generally done on the back of the parchment unless specified otherwise.

Top Tip: *Parchment paper stretches as you emboss it. However, it is important that you do not press hard with your embossing tools as this will not speed up the process of getting it white and you are more likely to split the parchment. Tools should be used gently with minimum pressure and embossing should be done in stages allowing the parchment to relax in between.*

On the back of the parchment and using a steel rule and your medium ball tool emboss the straight edges of the card. Stroke the tool from one end of the line to the other in one fluid movement. Do this several times, just enough to turn the parchment white. Now use the medium ball tool to emboss the rest of the traced design. Solid emboss the little oval shapes in the border and the flower centres. Solid embossing simply means filling in the shape. Turn the parchment over to the right side and check that you have embossed everything. If there are any stray pencil marks you can gently rub them out at this stage using a normal pencil eraser. Leave the parchment to rest for half an hour.

When you come back to it you should repeat all the embossing you previously did but using the Small Ball tool and this will make it whiter. On the *front* of the parchment gently emboss within the petal shapes with the medium ball tool so the parchment just turns from grey to white. Emboss from the tips of the petals towards the centre of the flower.

Perforate (deep)

Re-perforate the holes you made earlier with your single needle tool this time pressing the needles through the parchment as far as they will go.

Stipple

This technique uses a needle tool to produce a pattern of tiny dots. Lay your parchment face down on a piece of cardboard on a firm surface. Take your single needle tool and, holding it vertically, make rapid tapping movements inside the embossed flower centres. Make sure you completely fill the centre going right up to the edges of the circle.

Finishing

Fold the parchment in half along the fold line. Fold a piece of white cardstock large enough to make an insert and cover the front of it with coloured paper of your choice. Stick a narrow strip of double-sided sticky tape close to the fold on the back of the cardstock then insert it into your parchment card and stick the two together.

Top Tip: Double-sided sticky tape shows up less on white cardstock than it does on any other colour.

Make sure the card is closed and use your steel rule and craft knife to cut just outside your embossed lines along the top, bottom and right-hand sides through all layers. If you're just using this as a gift tag you can punch a hole through the top, left corner and add a ribbon. Alternatively, open out the finished card and stick your gift card in the centre of the back piece using a couple of double-sided sticky pads.



Pergmano News

M105, Forest animals

Ria van der Ploeg has previously created 2 M series for Pergamano. Both M series were a great success and we are very glad that Ria created new designs! This magazine is all about forest animals. Ria is known for her realistic paintings and this magazine will show you more than ever. Are you ready for a painting challenge? Then this magazine is definitely something for you! In the magazine you will find the working descriptions, colour examples and patterns of the projects. (20 pages, instructions in English, Dutch, German and French).

CODE 82015

Also designed and created by Ria van der Ploeg: M80 and M87

Round brush no. 2

The round brush has hairs in a round shape and is therefore ideal for the painting of details. It's a top quality brush in its price range, made from weasel hair and all types of paints and inks can be applied to parchment using this brush. The brush is suitable for various painting techniques. Packaged individually.

CODE 11431

Design paper butterfly kisses

Parchment paper butterfly kisses

This paper collection includes 10 different sheets of butterflies, swirls and ornaments. The decorated parchment paper and design paper is very versatile in use, for example as the base of your card. In combination with multi grids 31, 32 and 33 you will make something special of each card!

Please see page 6 for a card creation with the new collection Butterfly Kisses!

CODE 62591

CODE 62592

Design and creation: registered Pergamano® teacher Ria van der Ploeg

Head of fox

Materials needed

parchment paper (61406), Parchment paper leaf green (61587), black card stock
embossing tools: extra small ball stainless steel (10072), small ball stainless steel (10011), hockey stick (10001)
perforating tools: 2-needle (10261), semi square (10214)
dorso crayons, natural colours (21444)

General

The card is made of black card stock. Two extra front sheets are attached to the card. The 1st extra front sheet, with the painting, is made of ordinary parchment paper. The 2nd extra front sheet is made of parchment paper leaf green.

Step 1

Trace using white pencil: entire pattern.

Step 2

Create a base layer with perga liners dry technique. Please note: the colours are not applied all at once, but in very thin layers until the desired result is achieved. B2, B1, B3, B9 and around the eyes a little bit B13. Then rub the colours with a cotton bud.

Step 3

Painting with perga liners wet technique. Head of fox: A17, A2, A17+A1+A20 mixed (= light brown). A1+A3 mixed (= grey). Eyes of fox: A3: outlines and pupils. A17, A19: rest of eyes. Nose of fox: A3. A1: shining spot on nose. A20: rest of nose (to make it a little bit softer). A11+A20 mixed: top of the nose. Belly and throat of fox: A1, A3, A17 (mix these colors to create grey and light brown).

Step 4

On back: with dorso black around the fox. Perforate with perforating tool semi square according to pattern on the 2nd extra front sheet. Perforate with perforating tool 2-needle around the leaves.

Step 5

Emboss with embossing tools extra small ball and hockey stick: leaves in border. With embossing tool small ball: strips in semi square perforations. With embossing tool hockey stick: head of fox (to your own desire).

Step 6

Cut out the 2nd extra front sheet along the 2-needle perforations. Cut out the inner part of the 2nd extra front sheet along the semi square perforations. Fold the card. Cut the 1st extra front sheet to size. Attach

the 1st extra front sheet behind the 2nd extra front sheet with perga glue. Attach the front sheets to black card stock with small dots of perga glue.

Design and creation: registered Pergamano[®] teacher Nettie Kramer

Still life

Materials needed

parchment paper (61406), parchment paper shaded fuchsia (61584)

tinta: white (21201)

perga liners (21452)

embossing tools: fine stylus (10031), extra small ball (10071), extra small ball stainless steel (10072), small ball (10011), large ball (10021), hockey stick (10001)

perforating tools: 1-needle (10241), 2-needle (10261)

multi grid 13 (31423)

General

The project consists of three layers. The 1st and 2nd layers are made of ordinary parchment paper and the 3rd layer is made of parchment paper shaded fuchsia. The border is created on the 1st layer, the painting on the 2nd layer.

Step 1

Trace with tinta white: oval on 1st layer.

Step 2

Paint with perga liners the painting on the 2nd layer. B1, B11, A12, A3, A1: pink flowers. B9, B13, A12, A17, A3: yellow flowers. B5, A8: purple flowers. B5, A4: blue snowdrop. B13, A2, A17: dark red flowers. B1, B8, A1 + A12 + top of A3 mixed: roses. B9, A18, A3: bees. A17, A3, A1: twigs. B15, A16, A15, A17, A2, A3: leaves and stems. B1, B14, A9, A6, A1: watering can. A4: shadow watering can. A3: shadow below watering can.

Step 3

Emboss with embossing tool fine stylus: border, antennae's butterflies in border. With embossing tool extra small ball: twigs, pistil's red and pink flowers. With embossing tool small ball: dark red flowers, yellow flowers, purple flowers, blue snowdrop, stems of flowers. With embossing tool large ball: yellow flowers, pink flowers, bees and border of oval. With embossing tool hockey stick: roses, leaves of flowers, watering can. With embossing tool extra small ball stainless steel on multi grid 13: small motifs in border.

Step 4

Stipple with perforating tool 1-needle: bodies of butterflies in border. Perforate with perforating tool 2-needle: border on 1st layer of parchment paper according to pattern. Cut out the 2-needle perforations.

Cut out the 2nd layer of parchment paper, a little bit larger than the oval of the 1st layer of parchment paper.

Step 5

Attach the 2nd layer of parchment paper behind the 1st layer of parchment paper with perga glue. Attach behind the 2nd layer a sheet of parchment paper shaded fuchsia.

Dotty butterflies

Design and creation: Pergamano® Master teacher Linda Williams

Materials needed

parchment paper (61406), design paper butterfly kisses (62591), parchment paper butterfly kisses (62592), white card stock

multi grid 31 (31440)

clear stamps butterfly kisses background (41920), clear stamps butterfly kisses (41921)

perga colours exclusive (21432)

embossing tools: extra small ball (10071), small ball (10011), large ball (10021)

perforating tools (10241)

organza ribbon (length 20 cm, width 2.5 cm)

organza ribbon with hearts (length 20 cm)

paste jewels

sticky pads

4x pink brads, 4x green brads

Step 1

Stamp the swirls background stamp and two separate dotty butterflies onto ordinary parchment paper. Paint the butterfly images using perga colours exclusive and a brush. Emboss the dots on the butterflies and the swirls.

Step 2

Cut two squares from the background stamped image to measure 6.8cms x 6.8cms. Place the corresponding butterflies on multi grid 31, perforate around the outer edges using a 1-needle tool and then cut out.

Step 3

Cut out the following: white card stock – folded card 17.8cm x 10cm; pink butterflies parchment 17.8cm x 11.5cm; green dot design paper 7.8cm x 7.8cm; pink dot design paper 7.8cm x 7.8cm; plain green design paper 6.8cm x 6.8cm; plain pink design paper 6.8cm x 6.8cm; pink swirls strip 19cm long.

Step 4

Attaching a green brad at each corner, put the stamped background parchment square together with the square green paper and then the green dot paper. Do the same with the pink papers. Make a fold 1.5cm on the long side of the pink butterflies parchment and using double sided tape on the back, attach this to the white folded card. Attach the pink swirls strip near the spine of the card, folding over the edges and sticking at the back of the front page of the card, then cover with the sheer ribbon securing in the same way. Using sticky pads stick on the prepared squares.

Step 5

Using perga glue, stick on the butterflies and add a bow at the top of the card. Add gems to your taste.

Design and creation: registered Pergamano® teacher Lian Qualm

Spring card

Materials needed

parchment paper flex (61450), vellum black (62536)

tinta: white (21201)

embossing tools: shadow 0.8mm (10003), shadow 1.0mm (10004), shadow 1.2mm (10005), extra small ball (10071), small ball (10011), large ball (10021)

perforating tools: 1-needle (10241), 2-needle (10261), drop (10228)

self-adhesive strass stone white

General

The outer card is made of parchment paper flex, the inner card is made of vellum black.

Step 1

Trace the fold line with white pencil. With T white: pattern. Perforate shallowly with perforating tool drop according to pattern.

Step 2

Emboss with embossing tools shadow 0.8mm, shadow 1.0mm and shadow 1.2mm: large flowers. With embossing tools small ball and extra small ball: leaves, small flowers. With embossing tool large ball: circles (very lightly). With embossing tools large ball and small ball: figures in drop perforations.

Step 3

Stipple with perforating tool 1-needle: circles. Perforate deeply with perforating tool drop in existing perforations. With perforating tool 2-needle: according to pattern. Cut these perforations out.

Step 4

Flow the outer card. Perforate with perforating tool 2-needle along the card outline (through 2 layers). Cut the outer card out along these perforations. Fold the inner card. Attach the inner card into the outer card with double sided tape. Attach a strass stone in the middle of the card.

